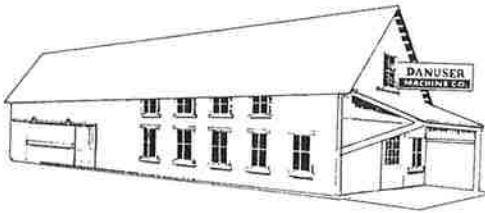


**WARNING ▲**

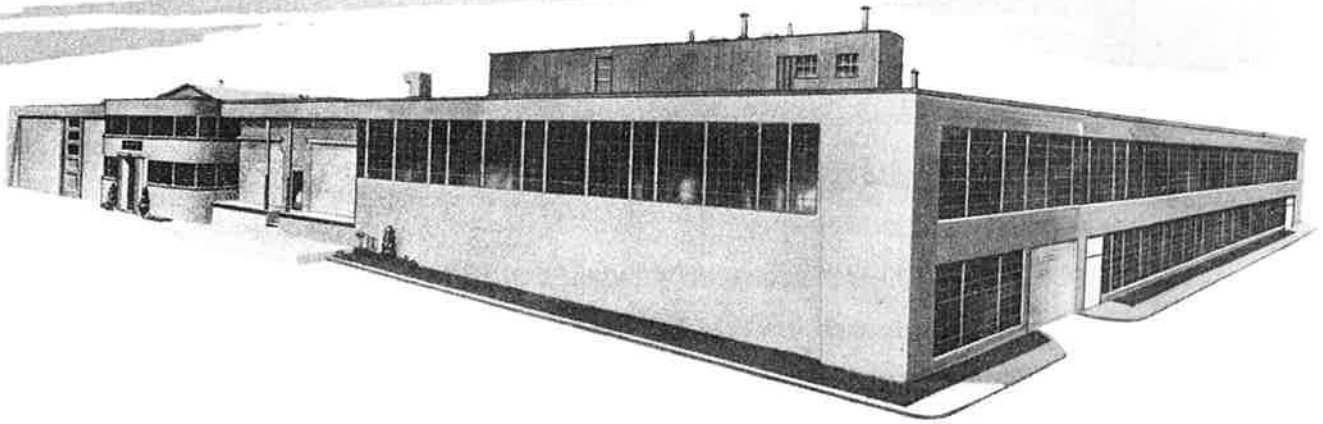
Check your unit configuration against this manual to insure that your unit complies with current production safety standards. If your unit doesn't comply CONTACT Danuser Machine Co., Inc. IMMEDIATELY at (573) 642-2246.



ince 1910~



Building wagons and repairing all types of machinery was the business of my grandfather, K. B. Danuser, in this small shop. With pride in his Swiss craftsmanship, he established one policy for his concern — "the job had to be *right*".



**A** new, modern plant built by my father, Henry Danuser, is located on the original site. This building and its men are dedicated to the tradition of fine craftsmanship and the production of better machines for American fields. The challenge of changing economic conditions is being met with improved manufacturing methods to hold the price standards which are an integral part of Danuser Machine Company. From this sound growth will come new products, designed to better serve agriculture and industry.







*Arvid Danuser*

## IMPORTANT

Returning your registration card immediately assures proper dating of warranty on this implement. It also gives Danuser Machine Company the opportunity to provide you with information on changes in this product as they develop throughout the years.

### Limited Warranty Policy

The Danuser Machine Company warrants its products for a period of one year (except for the G 20/40 gearbox which has a five year limited warranty) after date of sale by authorized dealer to be free from defects in material and workmanship, and will replace at its factory any part or parts thereof that shall be returned, with shipping charges prepaid, and which, when examined by us, shall disclose it to be defective, but this warranty shall not apply to implements or parts that have been subject to misuse, negligence, or accident, or that have been altered or repaired.

Items requiring your special attention in this manual or the decals on the implements are headed NOTE,  **CAUTION**,  **WARNING**, or  **DANGER**. FAILURE to comply with a NOTE may lead to premature failure of the implement. FAILURE to comply with a  **CAUTION** could result in damage or actual breakage of the implement or tractor, and minor personal injury. FAILURE to comply with a  **WARNING**, or  **DANGER** could result in personal injury or death.

### **WARNING**

To prevent possible personal injury or death during assembly, installation, operation, adjustment, or removal of the implement, wear gloves, safety glasses or face shield, and do not wear loose clothing. Keep other persons a minimum of twenty-five feet (25') from any unit under power.

1. Guards and safety shields are for YOUR protection. DO NOT operate equipment unless they are in place.
2. DO NOT operate PTO with tractor safety shield removed.
3. Never travel with PTO in operation.
4. Operate all PTO-POWERED implements on standard 540 RPM tractors.
5. Shut off tractor engine, set brakes, and lower implement to ground before leaving tractor seat.
6. Our implements are designed for a one-man operation. It is the responsibility of the tractor operator to see that no one is in the proximity of the implement when it is started. DO NOT operate the implement with another person near or in contact with, any part of the implement, PTO drive, or Auger. Keep other persons at least twenty-five feet (25') from all implements in operation or under power.
7. DO NOT oil or adjust implement while in operation.
8. DO NOT attempt to operate implement on steep hillsides.
9. Reduce speed while transporting.
10. When the use of hand tools is required to perform any part of assembly, installation, removal, or adjustment of the implement, be sure the tools used are designed and recommended by the tool manufacturer for the specific task they will be used for.
11. Keep all bolts and nuts tight. Replace any damaged or worn parts immediately.

**DANUSER MODEL MD-6 POST DRIVER MOUNTING INSTRUCTIONS USING  
ADAPTER KITS 3181 (CATEGORY I) OR 3182 (CATEGORY II)**

The above kits will attach the Danuser Model MD-6 Post Driver to many different tractors if they are equipped with standard 3-point hitches and PTO's.

** DANGER**

The tractor must also be equipped with stabilizers, or similar devices, to prevent lateral movement of hitch draft links. It is important that the tractor lift system be in good repair and capable of maintaining the hitch at a fixed height, both during operation and while standing idle.

Use the following procedure each time the Driver is mounted to a tractor having a different hitch.

** WARNING**

Assemble "U" joint tube "12" and shaft half "13", telescope them to minimum length, and record this length or mark the minimum length on inner shield. Extend the shaft and tube assembly to maximum length with 1 in. (25 mm) minimum shaft/tube engagement and record or mark this length. Determine the midpoint between the minimum and maximum lengths and record or mark this point. The shaft/tube assembly should operate at approximately this length when the Driver is properly mounted and being used on level ground and in a vertical position.

Attach "U" joint tube half "12" to driver gearbox shaft by first sliding the sleeve "15" on the gearbox shaft. Install woodruff key "6" in gearbox shaft. Slide shield "16" on sleeve "15". Align "U" joint tube half "12" with woodruff key "6" and slide on gearbox shaft. Install roll pin "17" through hole in side of shield "16" into yoke on "U" joint tube half "12" to hold in place. NOTE: If this kit is being installed on an older unit (Serial No. before 11527 Model MD-6), then roll pin hole must be drilled in gearbox shaft. Drill 17/64 dia. hole .844 from shoulder on shaft, install parts per above to verify location.

Suspend Driver securely in a vertical position with mounting bracket approximately 20 in. (500 mm) above floor or level ground area. Pack open end of "U" joint tube assembly "12" with pressure gun grease and install shaft assembly "13".

Assemble hitch bar "7" to tractor 3-point hitch and set height at approximately 20 in. (500 mm) above ground level. NOTE: Normally hitch bar assembles with the widest portion of the top plate to the rear, away from tractor; however, in rare instances, due to variations in tractor 3-point hitches, it may be necessary to assemble it with the wide portion toward tractor. Secure hitch bar with klik-pins and lateral stabilizers.

Back tractor into approximately the right position in front of Driver and attach "U" joint shaft to tractor 540 RPM PTO. Move tractor as required to position "U" joint shaft/tube assembly at the midpoint length previously established.

Bolt Driver mounting bracket to closest set of holes in hitch bar "7", using bolts "18", nuts "5", and lockwashers "3". If Driver mounting bracket is exactly halfway between two sets of holes, use the next set forward toward tractor.

** WARNING**

Shorten tractor pitch link to its minimum length and record this length. Be sure both ends of pitch link are screwed in evenly. Extend pitch link to its maximum length with 1-1/2 in. (40 mm) of thread engagement remaining, and record this length. Set pitch link at midpoint between minimum and maximum lengths and attach front end of pitch link and ring of safety chain "11" to tractor pitch link bracket. If pitch link bracket pivots and has more than one set of holes, attach pitch link and safety chain

to holes closest to pivot point. Attach rear end of pitch link to closest set of holes in pitch link extension "14". Attach safety chain "11" to pitch link extension "14" using clevis "8", pin "9", and cotter "10".

When Driver is in a vertical position, the "U" joint assemblies should be as nearly straight as practical. The Driver can be operated at a hitch bar height of from 15 to 24 in. (380 to 610 mm), depending upon conditions and operator preference. Raise or lower Driver to obtain the best combination of the above conditions.

 **DANGER**

Using tractor pitch link and hitch leveling screw, lean Driver forward, rearward, and to right and left, and check for "U" joint bottoming and disengagement. Do not extend pitch link or leveling screw to less than 1-1/2 in. (40 mm) remaining thread engagement. "U" joints must never have less than 1 in. (25 mm) engagement.

If "U" joints bottom or are over extended, it may be necessary to move Driver on hitch bar or attach pitch link to different holes in pitch link extension.

Extend pitch link and leveling screw to their maximum length, maintaining 1-1/2 in. (40 mm) thread engagement, or to the point that "U" joints have one 1 in. (25 mm) engagement, whichever occurs first. Shorten safety chain until it is tight and will prevent further extension of pitch link and secure at this length with klik-pin "4".

 **DANGER**

Never attach the Driver without the safety chain attached and properly adjusted.

INSTRUCTIONS FOR SETTING DRIVER ON SUPPORT STANDS

 **WARNING**

Select a firm and level location.

Disconnect "U" joint drive shaft "13" from tractor PTO. If a No. 2876 Support Stand kit is to be used, install legs and secure with bolts.


If stand is not used, tie Driver securely to post or other safe support so that it cannot fall.

Disconnect pitch link from pitch link extension "14" and disconnect safety chain "11" from tractor pitch link bracket. Detach draft links from hitch bar "7".

Items requiring your special attention in this manual or the decals on the implements are headed NOTE,

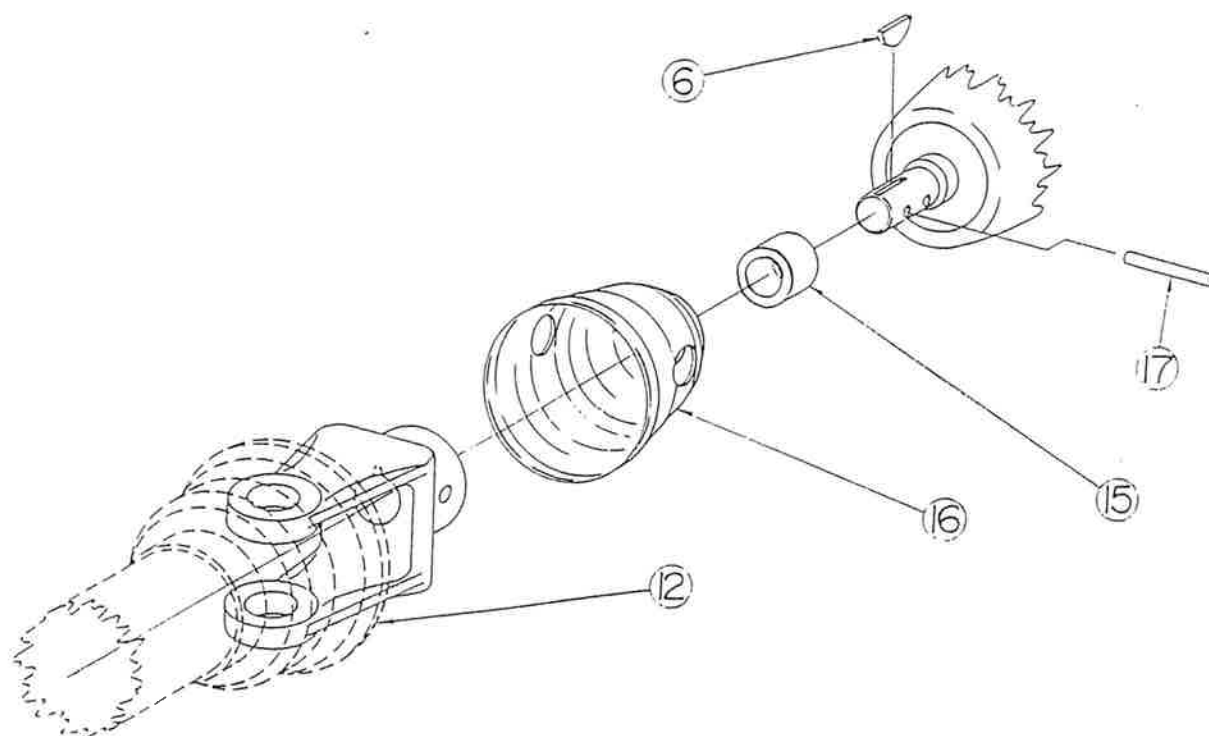
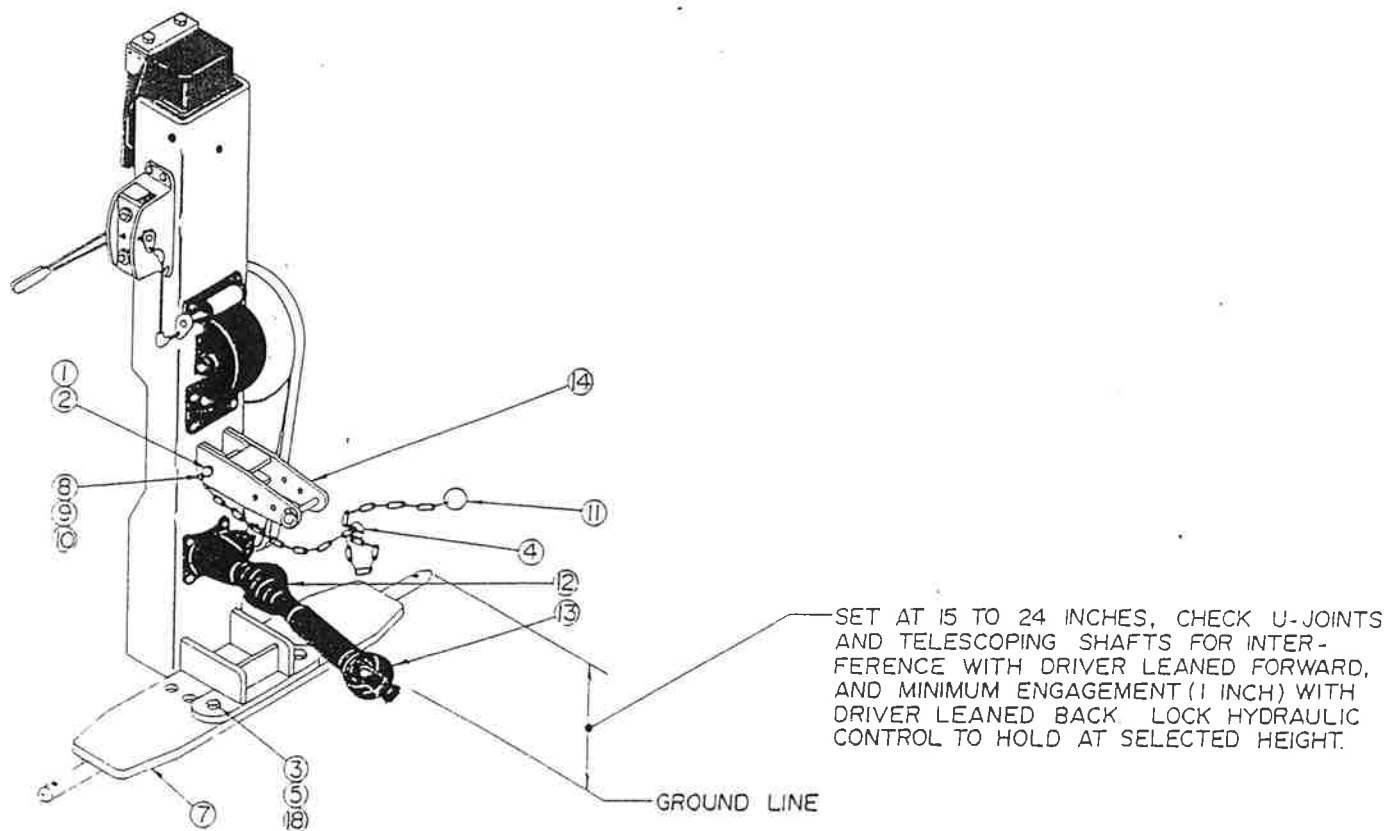
 **CAUTION**,  **WARNING**, or  **DANGER**.

FAILURE to comply with a NOTE may lead to premature failure of the implement.

FAILURE to comply with a  **CAUTION** could result in damage or actual breakage of the implement or tractor and minor personal injury.

FAILURE to comply with a  **WARNING** or  **DANGER** could result in personal injury or death.

**PARTS LIST-MODEL MD-6 POST DRIVER  
UNIVERSAL ADAPTER KITS 3181 (CATEGORY I) AND 3182 (CATEGORY II)**



PARTS LIST -- MODEL MD-6 POST DRIVER  
UNIVERSAL ADAPTER KITS 3181 (CATEGORY I)  
AND 3182 (CATEGORY II)

FIG. NO.	PART NO.	DESCRIPTION	NO. REQ'D.	
			3181	3182
	3181	ADAPTER KIT -- CATEGORY I	1	
	3182	ADAPTER KIT -- CATEGORY II		1
1	328	Cotter (3/16 x 1-1/4)	1	1
2	505	Pin (3/4 x 2-3/4)	1	1
3	823	Washer-Lock (3/4)	2	2
4	1533	Klik Pin (7/16)	1	1
5	1916	Nut-Hex (3/4 - 10)	2	2
6	2226	Key (Woodruff 3/16 x 7/8)	1	1
7	2274	Hitch Bar Assembly	1	
8	2724	Clevis	1	1
9	2725	Pin (3/8 x 1-1/2)	1	1
10	2726	Cotter (1/8 x 3/4)	1	1
11	2732	Chain Assembly-Safety	1	1
7	2865	Hitch Bar Assembly		1
12	3194	Joint & Tube Half w/Guard	1	1
13	3203	Joint & Shaft Half w/Guard	1	1
14	3179	Extension Assembly		1
14	3180	Extension Assembly	1	
15	3202	Sleeve	1	1
16	6057	Shield-U-Joint	1	1
17	7898	Roll Pin (1/4 x 2)	1	1
18	9037	Bolt (3/4 - 10 x 2-1/4)	2	2

IMPORTANT: When ordering parts, please  
furnish MODEL NUMBER, SERIAL  
NUMBER, PART NUMBER, and  
DESCRIPTION.

# DANUSER POST DRIVER OPERATING AND MAINTENANCE INSTRUCTIONS

## EVERY 10 HOURS:

Lubricate the following grease fittings: Both bearings on control handle shaft (E), Figure 2; brake release plate (F), Figure 2; cradle camshaft bearings (G), Figure 2. Apply 1 or 2 drops of SAE 30 or 40 oil to ball joints (H), Figure 2, on drive control rod and to studs (I), Figure 2, passing through control housing to brake release plate.

## EVERY 50 HOURS:

Remove drive chain (D), Figure 2, and wash thoroughly in kerosene. Allow to dry and soak for several minutes in SAE 10 or 20 oil. Allow chain to drain and replace.

Channel guide bearings are lubricated and sealed at the factory and require no further lubrication throughout the life of the bearings.

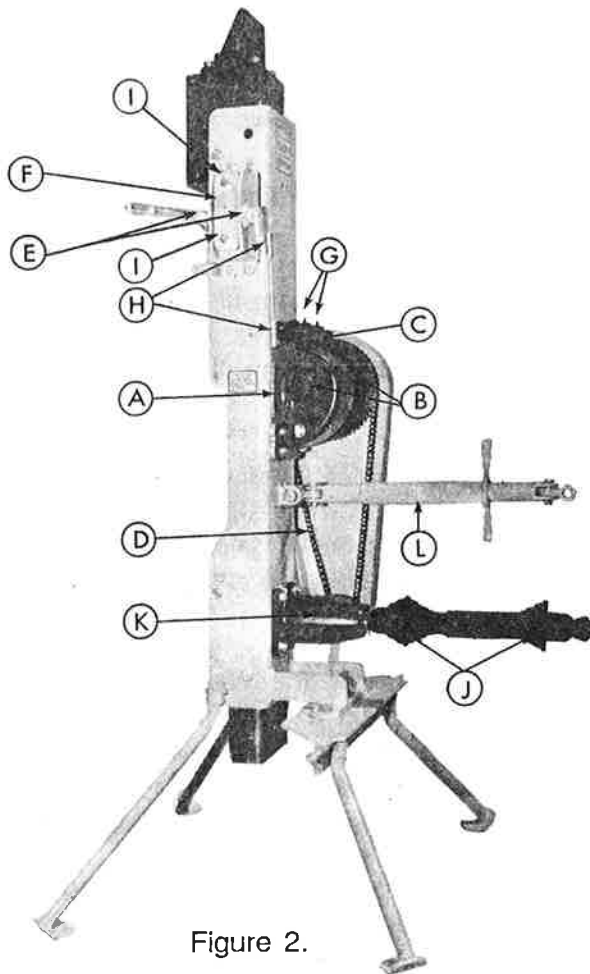


Figure 2.

## LUBRICATION INSTRUCTIONS

Use a good grade of pressure gun grease at all points unless otherwise instructed. **CAUTION:** Lubricant must never be allowed to get on either rubber friction surfaces or any part of drive channel contacted by the rubber friction surfaces as this will shorten the life of the rubber and also cause unsatisfactory operation.

### EVERY 5 HOURS:

Lubricate bearings at each end of friction wheel shaft (B), Figure 2. Lubricate friction wheel cradle cam (C), Figure 2. Apply 10 to 15 drops of SAE 30 or 40 oil to inner surface of drive chain (D), Figure 2. DO NOT lubricate drive chain when operating in extremely dusty conditions.

## THE FOLLOWING LUBRICATION INSTRUCTIONS APPLY TO TRACTOR MOUNTED DRIVERS ONLY:

### EVERY 5 HOURS:

Lubricate both universal joints and universal joint telescoping shaft (J), Figure 2.

### EVERY 50 HOURS:

Check oil level in driver gearbox (K), Figure 2. Oil level should be even with plug on side of gearbox. Lubricate pitch control group (L), Figure 2.

### EVERY 500 HOURS:

Remove gearbox (K), Figure 2, from driver guide channel, drain and flush. Refill with Texaco EP 140 or equivalent gear lubricant.

# **DANUSER POST DRIVER OPERATING AND MAINTENANCE INSTRUCTIONS**

## MAINTENANCE INSTRUCTIONS

Under ordinary conditions, there are only three parts, the two brake blocks and the friction wheel (A), Figure 2, which will show any appreciable wear and require adjustment.

When the brakes are applied, the brake blocks should hold the drive channel in the center or slightly to the left of the center of the guide channel (as viewed by operator). This is controlled by adding or removing shims from under the stationary brake block. The Driver is shipped with one thick and two thin shims at both the top and bottom of the stationary brake block. These shims may be used in any combination as long as the total thickness at the top and bottom is equal. When adjustment of the stationary brake block has been changed, it may be necessary to change the adjustment of the brake release plate (F), Figure 2. Adjustment of this plate is controlled by the lock nuts at the top and bottom. They should be adjusted so that the control handle has 1 to 2 inches free movement at its outer end.

When the control handle is in the "HOLD" position and the edges of the drive channel are out against the guide bearings, there should be from 1/16 to 1/8 inch of space between the friction wheel (A), Figure 2, and the back of the drive channel. A piece of number 14 gage wire may be used as a feeler gage and should just slide between the friction wheel and the drive channel. This spacing can be obtained by removing or adding shims alternately above and below the friction wheel.

If for some reason the Driver is ever found to be completely out of adjustment, the following procedure can be used to put it in operating condition again. Remove the transport pin and drop the drive channel onto a wooden block placed on the ground. Disconnect ball joint at lower end of the control rod from lever on the cradle cam shaft. Adjust the brakes and friction wheel (A), Figure 2, setting as outlined above. Before checking the friction wheel spacing, be sure that the cradle cam is released and the friction wheel is out as far from the drive channel as the cradle cam will allow. Adjust the length of the control rod until the lower ball joint stud slips freely into the hole in the cradle camshaft lever. Secure with the nut and lockwasher and test operation of the Driver. If it seems desirable to have more control handle movement between the point where the brakes release and the friction wheel engages, this may be obtained by lengthening the control rod slightly from the setting obtained above. Or, if slightly less control handle movement is desired, this may be obtained by shortening the control rod.

## DRIVE CHAIN ADJUSTMENT

To adjust the drive chain (D), Figure 2, lower the control handle as far as it will go and loosen nuts securing the gearbox (K), Figure 2, to the guide channel. Raise or lower the gearbox until there is little or no slack in the drive chain. DO NOT get the drive chain too tight. Tighten bolts securing gearbox to the guide channel and check the chain again. Return the control handle to the "HOLD" position.

## CONVERSION

The Danuser Post Driver may be converted for breaking concrete as follows: attach the Demolition Head (part no. 2298) to the Driver Head with four 5/8 x 1-1/2 cap screws and lockwashers furnished. This head is available as extra equipment from your Danuser Dealer.

Support the drive channel with a suitable hoist and remove the transport pin. Position the control handle in the "LOWER" position and raise the drive channel from the guide channel. Invert the drive channel and reinsert it in the guide channel. Insert the transport pin through the top holes in the guide channel and secure with the klik-pin provided.



DANUSER MACHINE COMPANY

SERVICE ADJUSTMENT POLICY

LIMITED WARRANTY

The Danuser Machine Company warrants its products, for a period of one year (except for the G 20/40 gearbox which has a five year limited warranty) after sale by authorized dealer, to be free from defects in material and workmanship.

1. Parts may not be returned without authorization by Danuser Machine Company.
2. All products returned under a warranty inspection claim must be returned PREPAID to our factory.
3. To file a warranty inspection claim, your dealer must request from his Danuser Distributor a "SERVICE ADJUSTMENT REQUEST", which must be typed in triplicate. Forward the original and one duplicate through your dealer and distributor to DANUSER MACHINE COMPANY. If the return of the parts listed on your "SAR" is approved for warranty inspection, you will receive through your distributor and dealer the required "RETURN GOODS TAG(S)". You should then attach the tag(s) and return the parts through your dealer and distributor. Shipments arriving at our factory on a freight collect basis will be refused by our receiving department.
4. Our obligation under the above warranty is limited to repair or replacement at our factory of any part or parts thereof which the Danuser Machine Company determines to be defective.
5. Products or parts thereof which have been, by Danuser Machine Company's examination, improperly operated, damaged by accident or negligence, field repaired or altered, are not covered by this warranty.
6. Some purchased components, including gasoline engines, hydraulic motors, valves, and cylinders, but not limited to, are subject to the inspection and warranty of the respective manufacturer. Thus, delays in a warranty determination can be expected while we await their decisions. NOTE: Hydraulic valves, motors, and cylinders must arrive with all ports sealed from dirt and moisture. If they arrive with open ports, the warranty is void and no inspection will be made.
7. We reserve the right to change our specifications and design at any time.
8. This warranty shall not obligate Danuser Machine Company to bear any cost of labor for field replacement, testing, or adjustment.

## DANUSER POST DRIVER OPERATING AND MAINTENANCE INSTRUCTIONS

The following instructions will help you become familiar with the proper use of your Driver and obtain the greatest service life from it. In order that we may better serve you and your dealer, it is important that you fill out the enclosed registration card and mail it to us at once.

### OPERATING INSTRUCTIONS

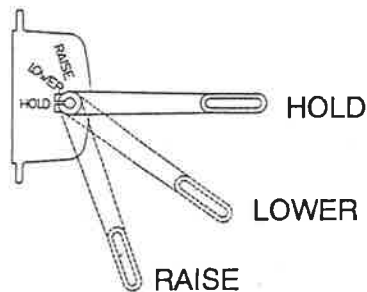
Before operating Driver, refer to Lubrication Instructions and lubricate as directed.

#### **WARNING**

After removing transport pin, care should be used when working around Driver as any small movement of the control handle will cause drive channel to drop. Keep other persons a minimum of twenty-five feet (25') from driving operation.

#### **NOTE**

Always operate the control handle in the lower half of its movement. Do not push up on the handle past 3 o'clock position, as the Driver will not operate properly.



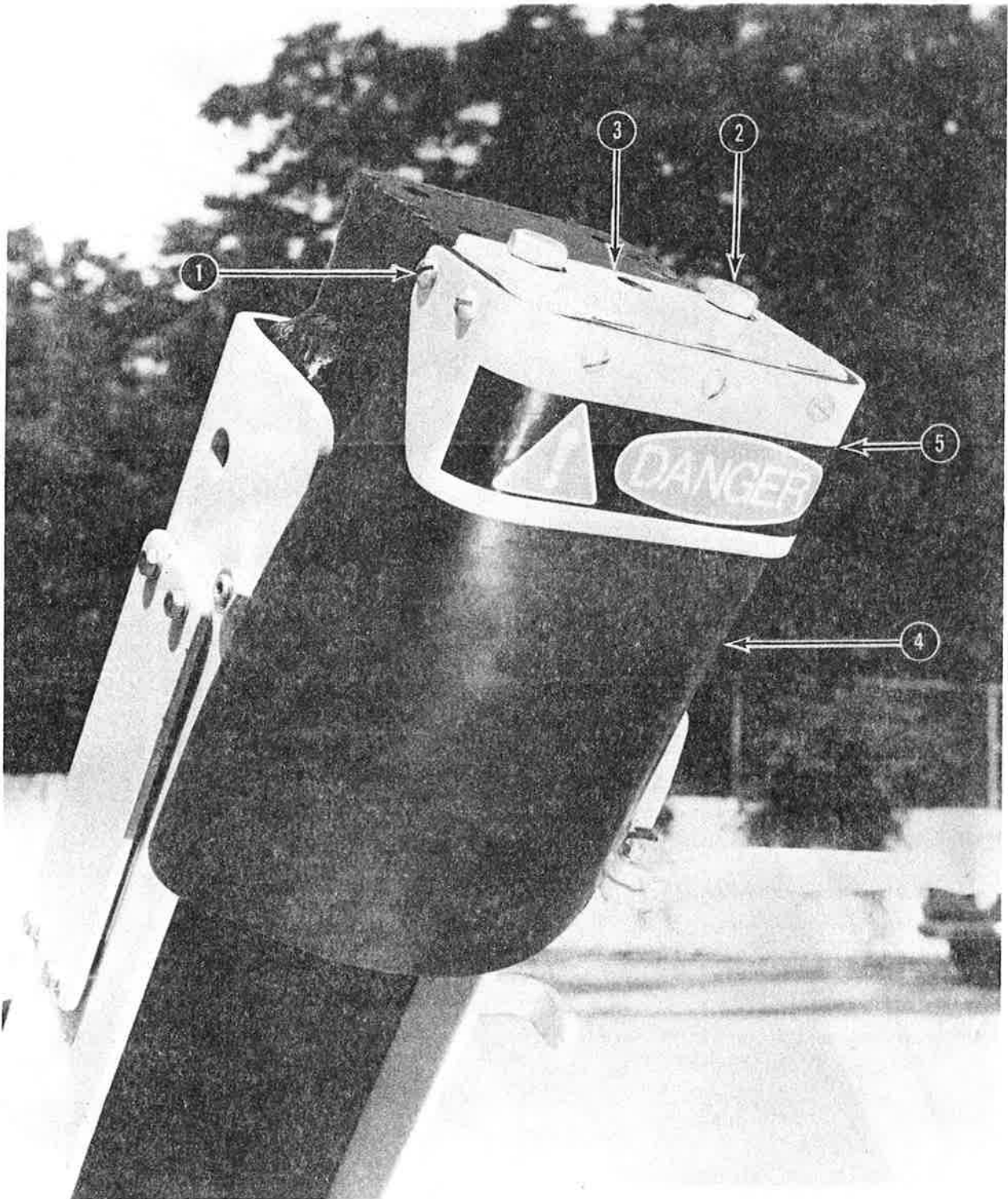
Before actual post driving is begun, operator should become familiar with the operation of the Driver by raising and dropping drive channel on a heavy wooden block for a few minutes. Lowering the control handle slightly will cause the drive channel to drop. Further lowering of the control handle will cause the drive channel to raise. Anytime the control handle is released, it will return to neutral and the brakes will be applied. It will be found that a definite rhythm can be developed whereby the drive channel is caught and started to raise again immediately after striking the top of the post.

The control handle should never be lowered farther than is absolutely necessary to engage friction wheel and raise drive channel, as this places an excessive load on the friction wheel and shortens its life. Also, the friction wheel should never be left engaged after the drive channel has been raised to its maximum height.

#### **WARNING**

When guiding the post, always grip it in the cut-out area of the guide channel and avoid placing fingers such that they could be pinched between the post and the side of the channel.

When driving steel posts, the drive weight should not be raised more than 6 inches above the top of the post. It is recommended that a Danuser Steel Post Guide Sleeve (No. 2201) be used. This sleeve is available as extra equipment from your Danuser Dealer. When not in use, the driver should never be allowed to stand with the friction wheel engaged as this will flatten the rubber on the friction wheel and cause uneven operation.

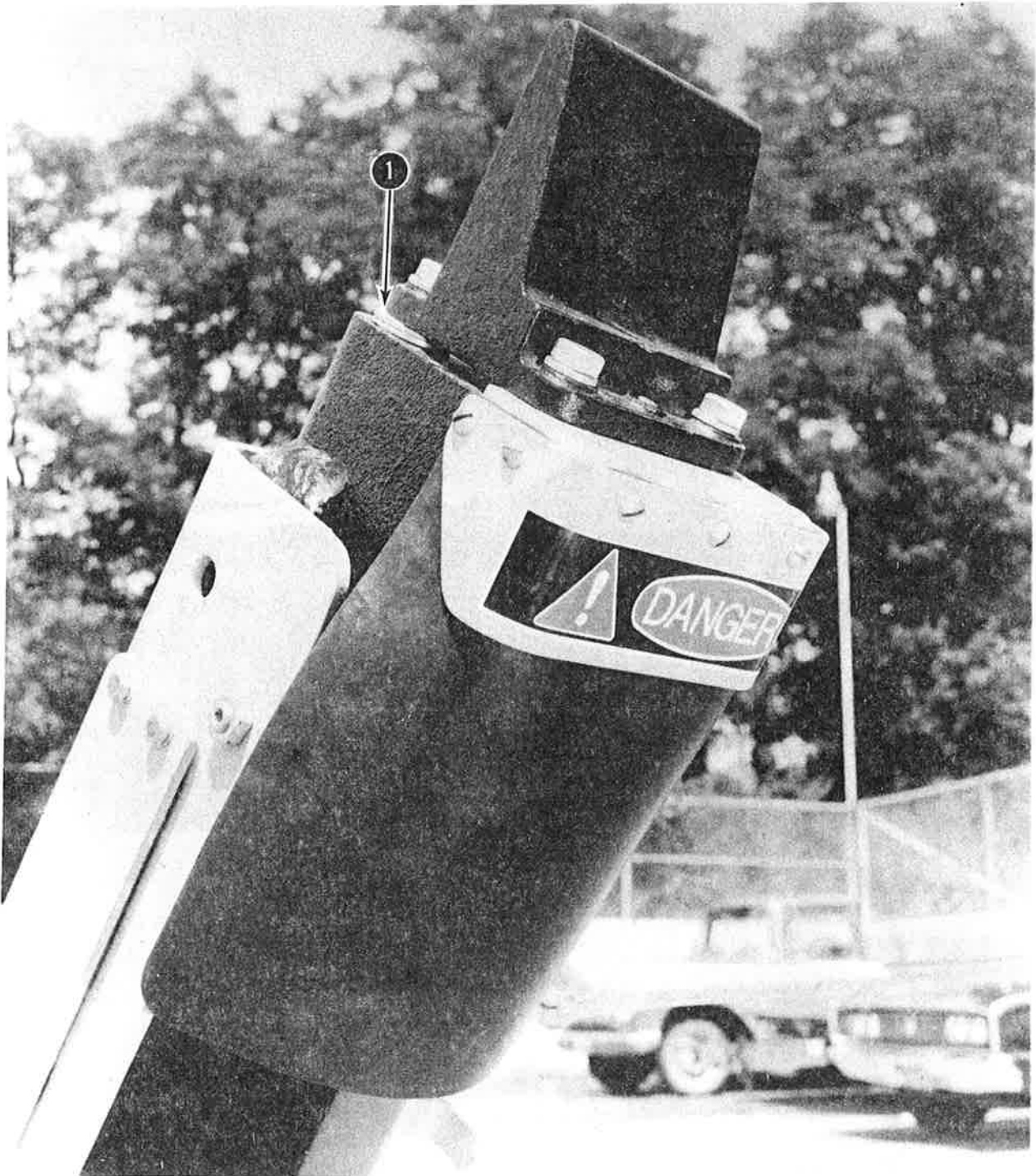


**⚠ WARNING**

SAFETY REGULATIONS REQUIRE THIS GUARD BE IN PLACE BEFORE OPERATING DRIVER.

PARTS LIST - DRIVER WEIGHT GUARD KIT NO. 3191

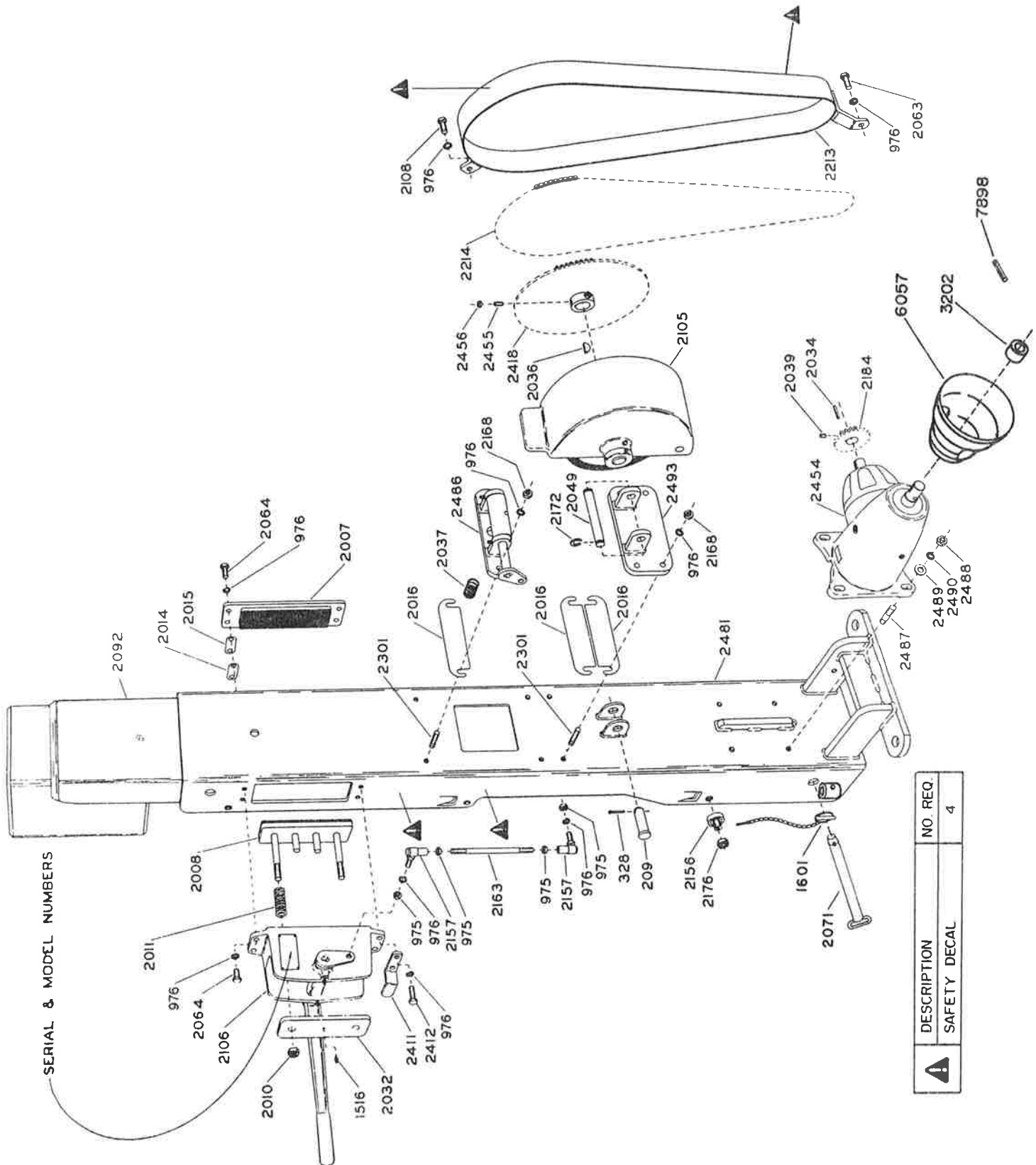
FIG. NO.	PART NO.	DESCRIPTION	NO. REQ'D
1	269	Screw (5/16-18 x .62)	7
2	1179	Bolt (5/8-11 x 1.00)	2
3	3186	Base Assembly	1
4	3187	Guard	1
5	3190	Band Assembly	1



**! WARNING**

WHEN ATTACHING A DEMOLITION HEAD GROUP NO. 2298 OR AN AUXILIARY WEIGHT GROUP NO. 2781 TO A POST DRIVER EQUIPPED WITH A DRIVER WEIGHT GUARD KIT NO. 3191, BE SURE TO PLACE TWO NO. 4120, 5/8 WASHER-SHIMS BETWEEN THE DEMOLITION HEAD OR AUXILIARY WEIGHT AND DRIVER WEIGHT OR THE TWO REAR BOLTS. (THIS IS ILLUSTRATED BY FIGURE 1 ABOVE.) YOU MUST USE FOUR BOLTS SUPPLIED IN EACH KIT WHEN MOUNTING THE DEMOLITION HEAD OR AUXILIARY WEIGHT.

# DANUSER POST DRIVER MODEL MD-6 GENERAL ARRANGEMENT



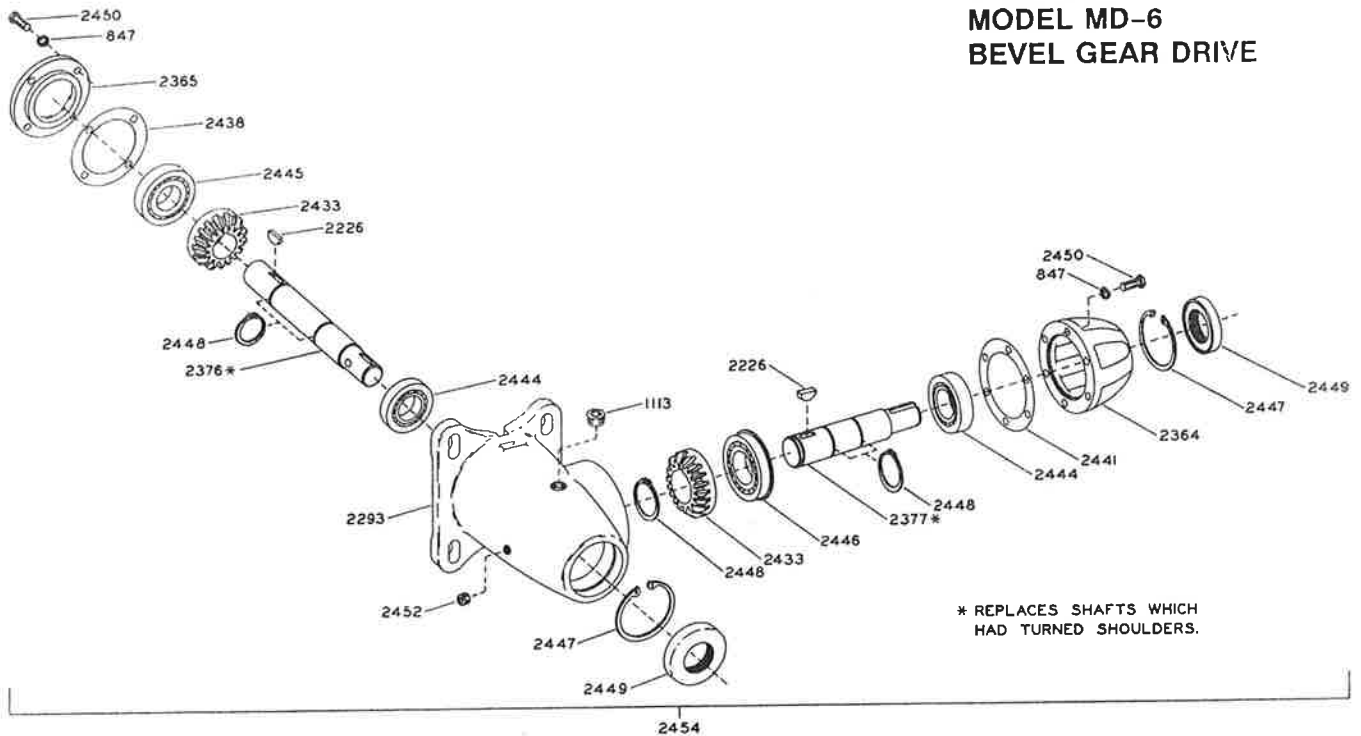
SERIAL & MODEL NUMBERS

DESCRIPTION	NO. REQ.
SAFETY DECAL	4

DANUSER POST DRIVER, MODEL MD-6  
GENERAL ARRANGEMENT

PART NO	DESCRIPTION	NO REQ
209	PIN (3/4 X 2-1/2)	1
328	COTTER (3/16 X 1-1/4)	1
975	NUT (3/8-24)	4
976	LOCKWASHER (3/8)	18
1516	FITTING	1
1601	KLIK-PIN	1
2007	BRAKE BLOCK	1
2008	BRAKE CONTROL BLOCK	1
2010	NUT (SELF-LOCKING 1/2 x 20)	2
2011	SPRING	4
2014	SHIM (1/16 THICK)	2
2015	SHIM (1/64 THICK)	4
2016	SHIM	21
2032	RELEASE PLATE (INCLUDES 1516 FITTING)	1
2034	KEY (SQUARE 3/16 x 1)	1
2036	KEY (WOODRUFF 3/16 x 1)	1
2037	SPRING	1
2039	SET SCREW (ALLEN HEAD 1/4-20 x 3/8 CUP POINT)	2
2049	HINGE PIN	1
2063	CAP SCREW (3/8-16 x 1)	1
2064	CAP SCREW (3/8-16 x 3/4)	6
2071	TRANSPORT PIN	1
2092	DRIVE CHANNEL	1
2105	FRICTION DRIVE GROUP-SEE FRICTION DRIVE & CONTROL PAGE	1
2106	CONTROL HOUSING GROUP-FRICTION DRIVE & CONTROL PAGE	1
2108	CAP SCREW (3/8-16 x 5/8)	1
2156	BEARING ASSEMBLY	6
2157	BALL JOINT	2
2163	CONTROL ROD	1
2168	NUT (3/8-16)	6
2172	RETAINING RING	2
2176	NUT (5/8-18)	6
2184	DRIVE SPROCKET	1
2213	CHAIN GUARD	1
2214	DRIVE CHAIN (INCLUDES DETACHABLE LINK)	1
2301	STUD (3/8-16 x 1-3/4)	6
2411	STOP	1
2412	CAP SCREW (3/8-16 x 1-1/8)	2
2418	DRIVEN SPROCKET	1
2454	GEARBOX-SEE GEARBOX PAGE	1
2455	SET SCREW (ALLEN HEAD 5/16-18 x 3/4 CUP POINT)	2
2456	NUT (5/16-18)	2
2481	GUIDE CHANNEL	1
2486	CRADLE CAM GROUP-SEE FRICTION DRIVE & CONTROL PAGE	1
2487	STUD (7/16-14 x 1-5/8)	4
2488	NUT (7/16-14)	4
2489	WASHER (7/16)	4
2490	LOCKWASHER (7/16)	4
2493	CRADLE HINGE	1
3202	SLEEVE	1
6057	SHIELD	1
7898	ROLL PIN	1

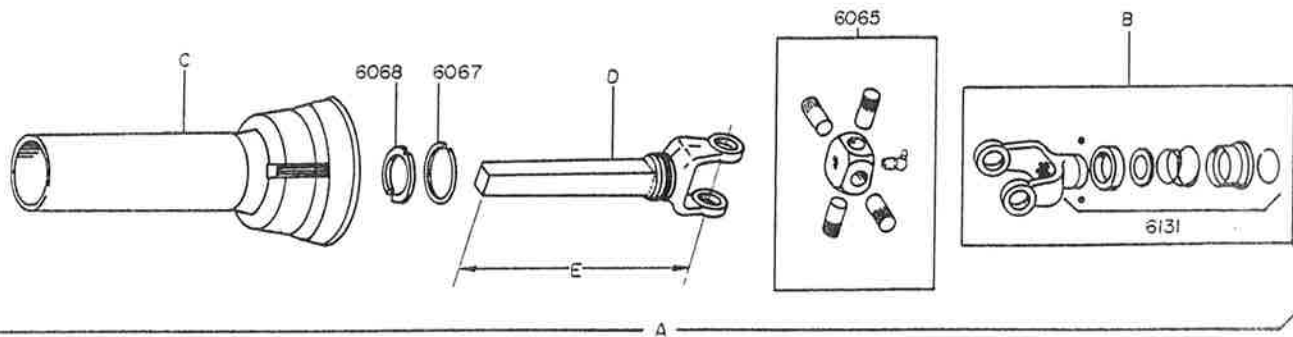
**DANUSER POST DRIVER  
MODEL MD-6  
BEVEL GEAR DRIVE**



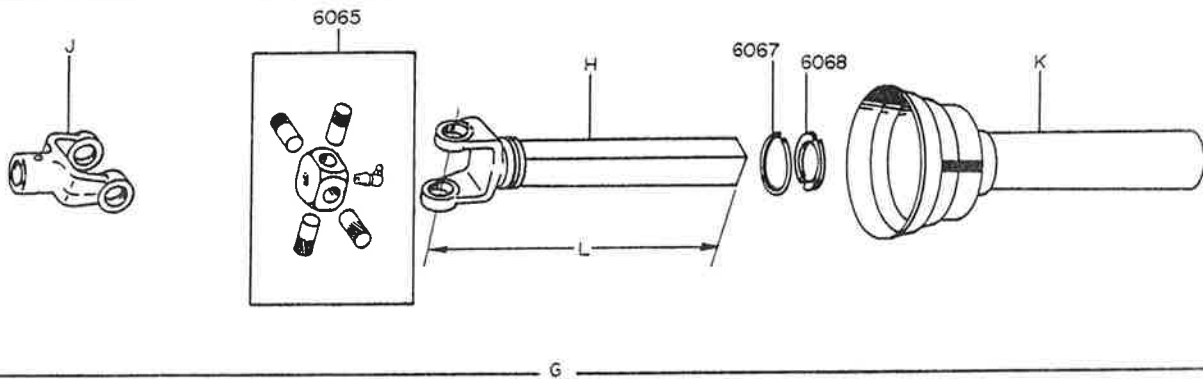
PART NO.	DESCRIPTION	NO. REQ.
2454	BEVEL GEAR DRIVE CONSISTS OF THE FOLLOWING:	1
847	LOCKWASHER (5/16)	10
1113	FILL PLUG	1
2226	KEY (WOODRUFF 3/16 x 7/8)	2
2293	HOUSING	1
2364	HOUSING	1
2365	CAP	1
2376	INPUT SHAFT (INCLUDES 2-2448 SNAP RINGS)	1
2377	OUTPUT SHAFT (INCLUDES 2-2448 SNAP RINGS)	1
2433	GEAR	2
2438	SHIM (USE AS REQUIRED)	6
2441	SHIM (USE AS REQUIRED)	6
2444	BEARING	2
2445	BEARING	1
2446	BEARING	1
2447	RETAINING RING	2
2448	RETAINING RING	5
2449	OIL SEAL	2
2450	CAP SCREW (5/16-18 x 7/8)	10
2452	CHECK PLUG	1

**IMPORTANT:** When ordering parts, please furnish GEAR DRIVE SERIAL NUMBER, DRIVER SERIAL NUMBER, PART NUMBER, and DESCRIPTION.

**DANUSER POST DRIVER  
MODEL MD-6  
UNIVERSAL DRIVES**



Part Numbers				Dimensions in Inches	
A-Complete	B-Yoke Quick-Detach	C-Outer Shield	D-Yoke & Shaft	E	Spline Size
3195	6130	3200	3201	9-3/8	1-3/8-6
3203	6130	3204	3205	11-3/8	1-3/8-6
3206	6130	3207	3208	14-3/4	1-3/8-6



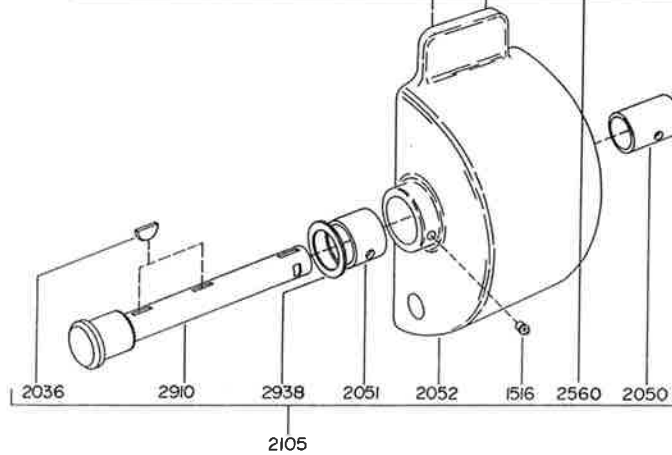
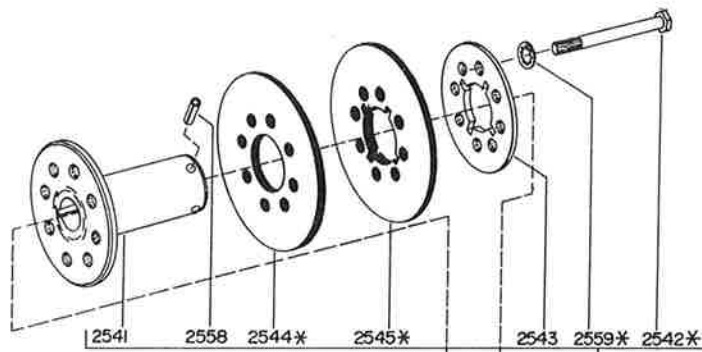
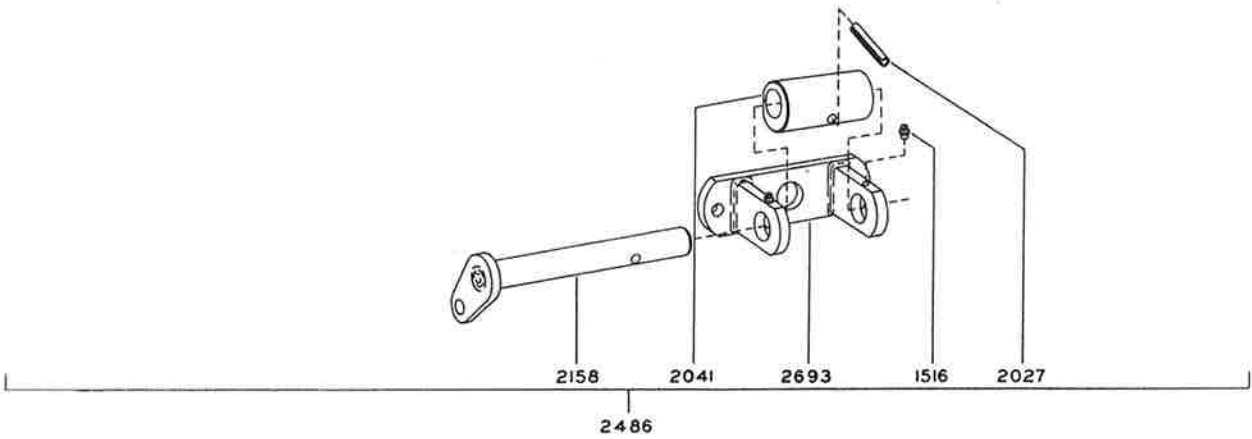
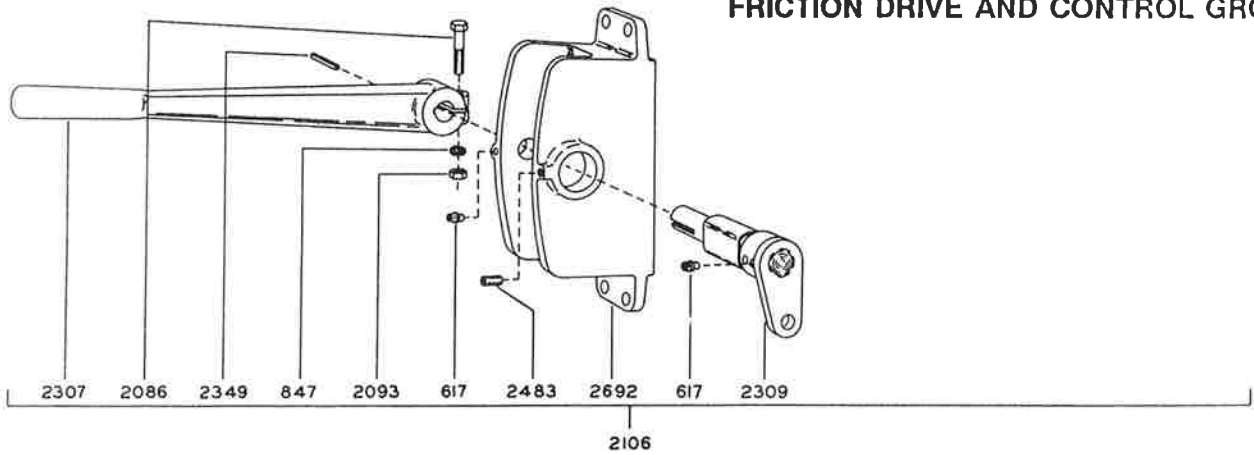
**UNIVERSAL JOINT TUBE ASSEMBLIES**

Part Numbers				Dim. in Inches	
G Complete	H Yoke & Tube	J Yoke	K Inner Shield	L	
3194	3198	3197	3199	9-1/2	

**IMPORTANT:** When ordering parts, please furnish PART NUMBER and DESCRIPTION.



**DANUSER POST DRIVER  
MODEL MD-6  
FRICTION DRIVE AND CONTROL GROUPS**



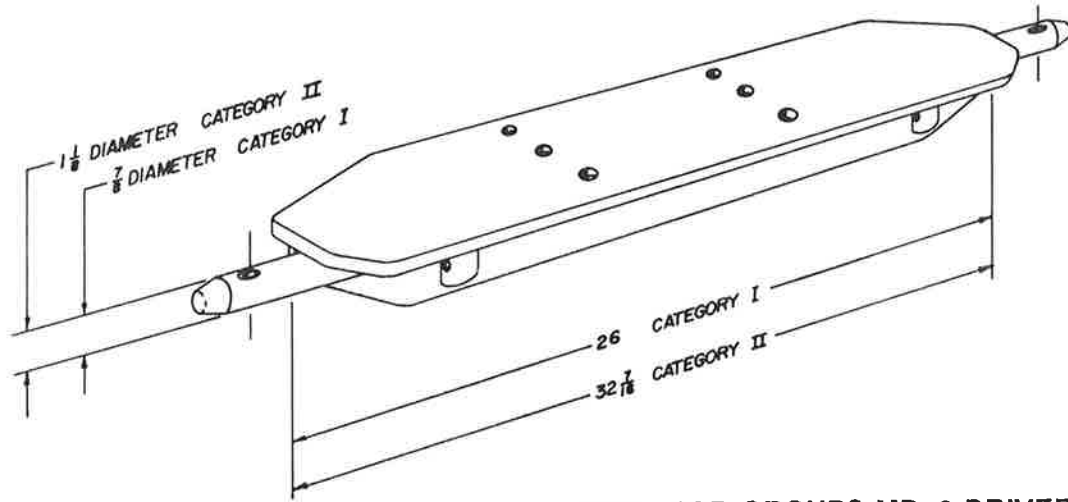
**DANUSER POST DRIVER  
MODEL MD-6  
FRICTION DRIVE and CONTROL GROUPS**

PART NO.	DESCRIPTION	NO. REQ.
2106	CONTROL HOUSING GROUP CONSISTS OF THE FOLLOWING:	1
617	FITTING	3
847	LOCKWASHER (5/16)	1
2086	CAP SCREW (5/16-24 x 1-1/2)	1
2093	NUT (5/16-24)	1
2307	HANDLE	1
2309	CAMSHAFT ASSEMBLY (INCLUDES 1 NO. 617 FITTING)	1
2349	KEY (SQUARE 1/8 x 1-1/8)	1
2483	SET SCREW (ALLEN HEAD 1/4-20 x 1/2 CUP POINT)	1
2692	HOUSING (INCLUDES 2 NO. 617 FITTING)	1
2486	CRADLE CAM GROUP CONSISTS OF THE FOLLOWING:	1
1516	FITTING	2
2027	ROLL PIN (3/16 x 1)	1
2041	CAM	1
2158	SHAFT	1
2693	SUPPORT (INCLUDES 2 NO. 1516 FITTINGS)	1
2105	FRICTION DRIVE GROUP CONSISTS OF THE FOLLOWING:	1
2036	KEY (WOODRUFF 3/16 x 1)	2
2050	BUSHING	1
2051	BUSHING	1
2052	CRADLE ASSEMBLY, INCLUDES THE FOLLOWING:	1
1516	FITTING	2
2050	BUSHING	1
2051	BUSHING	1
2910	FRICTION WHEEL SHAFT - (REPLACES 2053 & 2067)	1
2938	WASHER	1
2560	FRICTION WHEEL, CONSISTS OF THE FOLLOWING:	1
2541	HUB	1
*2542	CAP SCREW (3/8 X 4)	8
2543	END PLATE	1
*2544	RUBBER DISC	14
*2545	RUBBER DISC	1
2558	ROLL PIN (1/4 X 3/4)	4
*2559	LOCKWASHER (3/8 SHAKEPROOF)	8

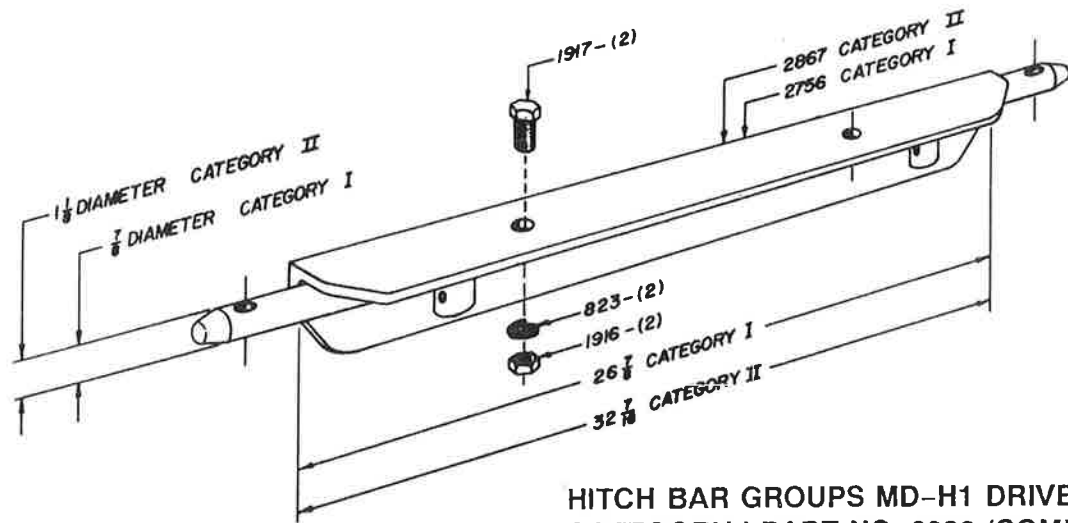
\* These parts are packaged in the quantities shown as a service repair kit.  
Order Friction Wheel Repair Kit, Part No. 2590.

**IMPORTANT:** When ordering parts, please furnish DRIVER MODEL NUMBER, SERIAL NUMBER, PART NUMBER, and DESCRIPTION.

DANUSER POST DRIVER  
 MODEL MD-6 - MD-H1  
 HITCH BAR GROUPS

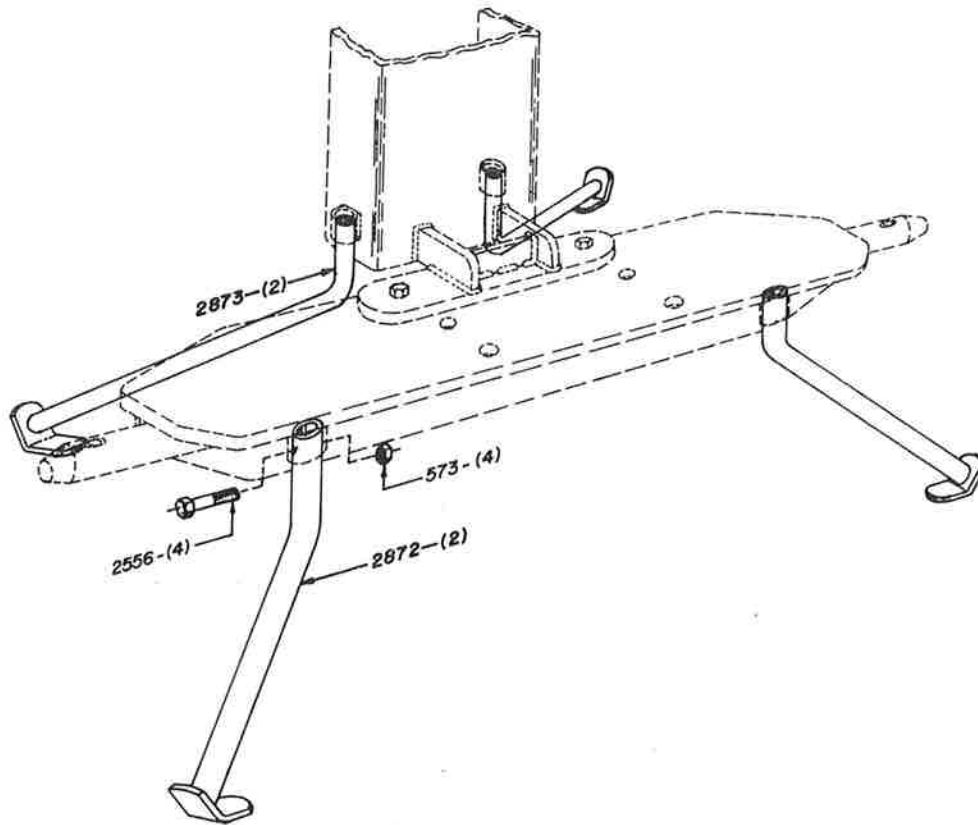


HITCH BAR GROUPS MD-6 DRIVER  
 CATEGORY I PART NO. 2274  
 CATEGORY II PART NO. 2865



HITCH BAR GROUPS MD-H1 DRIVER  
 CATEGORY I PART NO. 2926 (COMPLETE)  
 CATEGORY II PART NO. 2923 (COMPLETE)

DANUSER POST DRIVER  
MODELS MD-6 and MD-H1  
OPTIONAL LEG KIT



LEG KIT (Optional) MD-6 and MD-HI DRIVERS  
PART NO. 2876 (Complete)

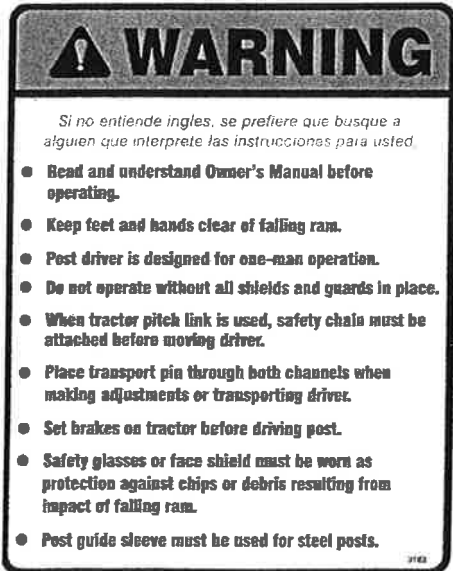
# SAFETY SIGNS FOR DANUSER MD6 DRIVER



3189



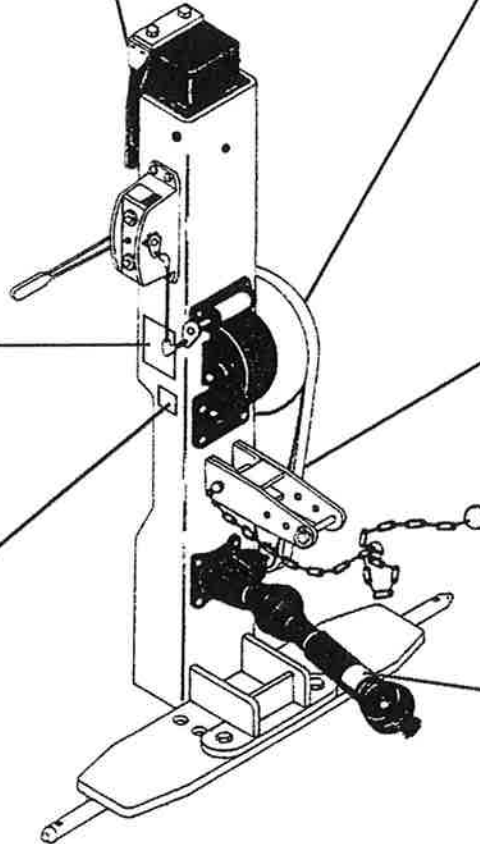
PHDC 4



3183



2169



2561



Clean or replace all safety signs if they cannot be clearly read and understood.



13-10021

The safety signs for the Danuser Model MD6 Post Driver are located at the above referenced locations.

This page intentionally left blank.